

University of Northampton Academic staff in post at 31 March 2017 by protected characteristic

The following information provides data on all Academic staff as at 31 March 2017 by protected characteristics. Figures do not include those employed by UNEL. There was a total Academic staff headcount of 869. Data is rounded to the nearest whole percent.

Gender

Figure 1 shows the gender of all Academic staff. Female staff make up 52% of the academic staff population.

Figure 1

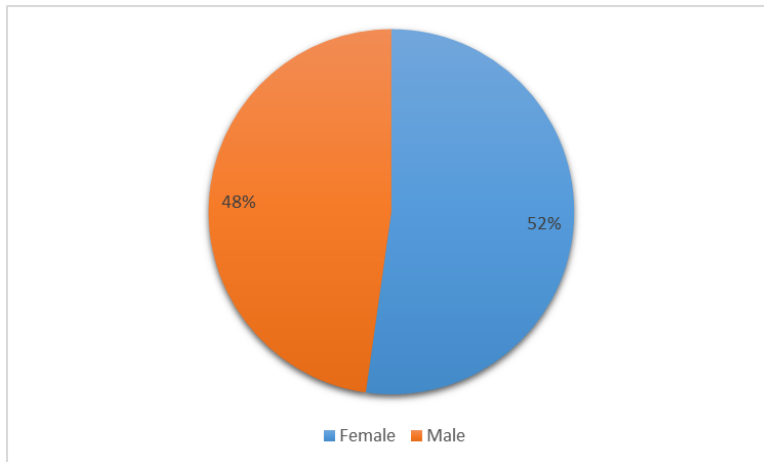


Figure 2 shows the gender of all Academic staff by contract type. Female staff make up 60% of casual staff, 52% of full time staff and 51% of part time staff.

Figure 2

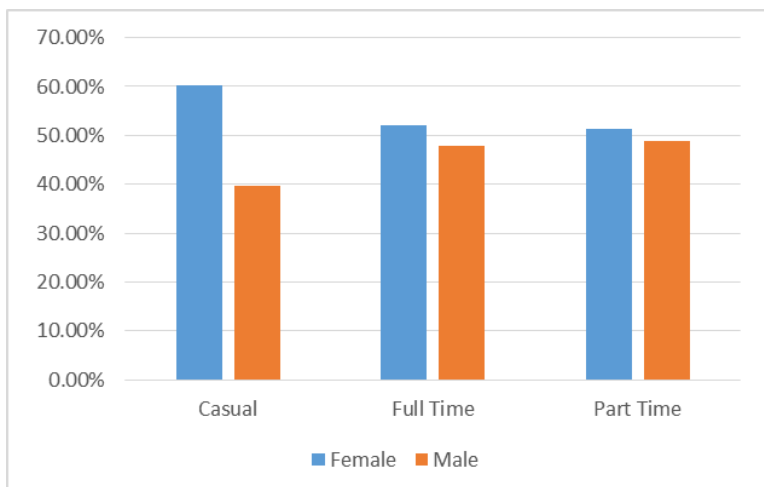
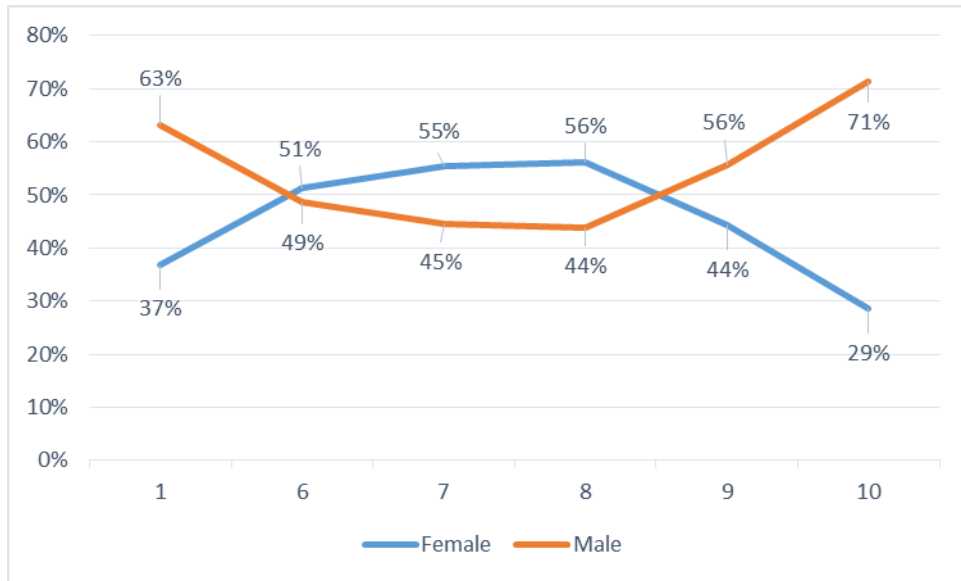


Figure 3 shows the gender of all Academic staff in each grade.

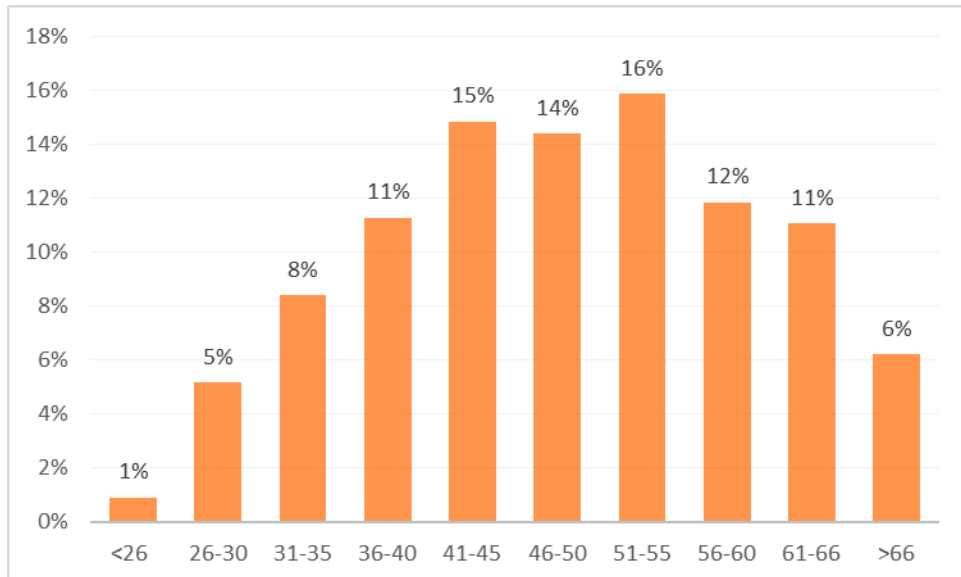
Figure 3



Age

Figure 4 shows the age of all Academic staff.

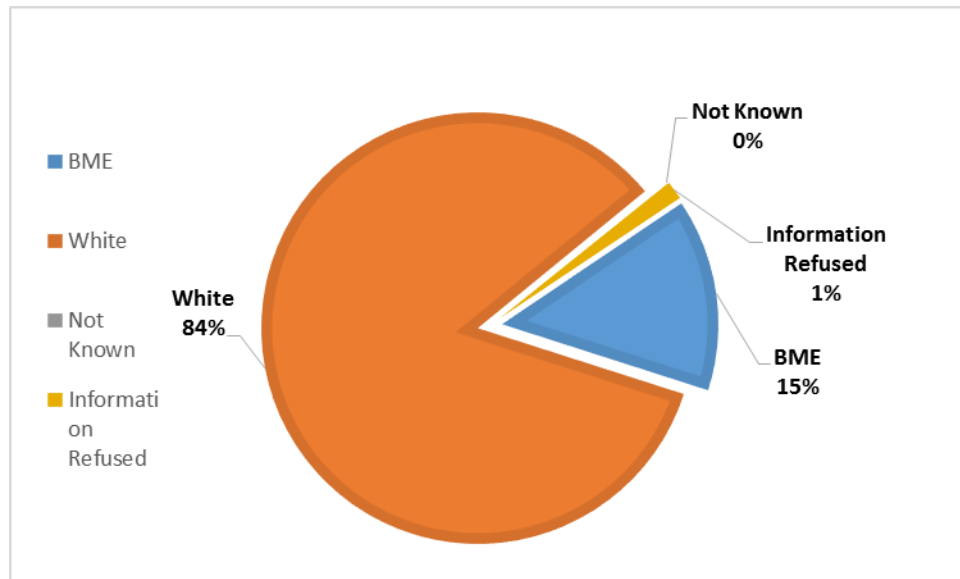
Figure 4



Ethnicity

Figure 5 shows the ethnicity of all Academic staff at the University. BME staff represent 15% of academic staff.

Figure 5



Disability

Figure 6 shows the percentage of all Academic staff that have declared a disability.

Figure 6

