

University of Northampton Support staff in post at 31 March 2017 by protected characteristic

The following information provides data on all Support staff as at 31 March 2017 by protected characteristics. Figures do not include those employed by UNEL. There was a total staff headcount of 654. Data is rounded to the nearest whole percent.

Gender

Figure 1 shows the gender of all Support staff. Female staff make up 71% of the staff population.

Figure 1

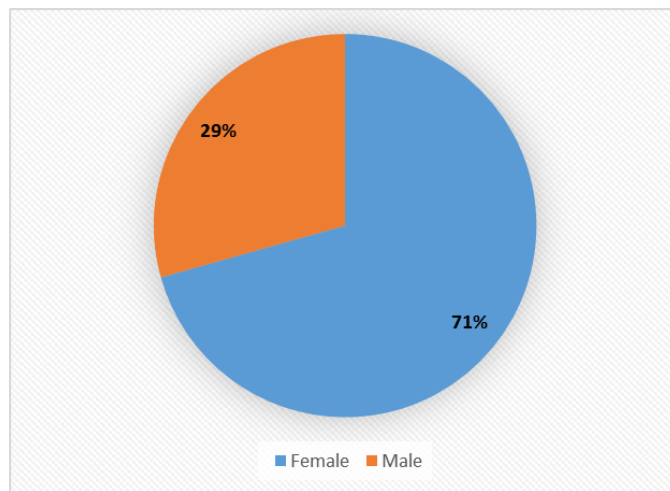


Figure 2 shows the gender of all Support staff by contract type. Female staff make up 67% of casual staff, 66% of full time staff and 88% of part time staff.

Figure 2

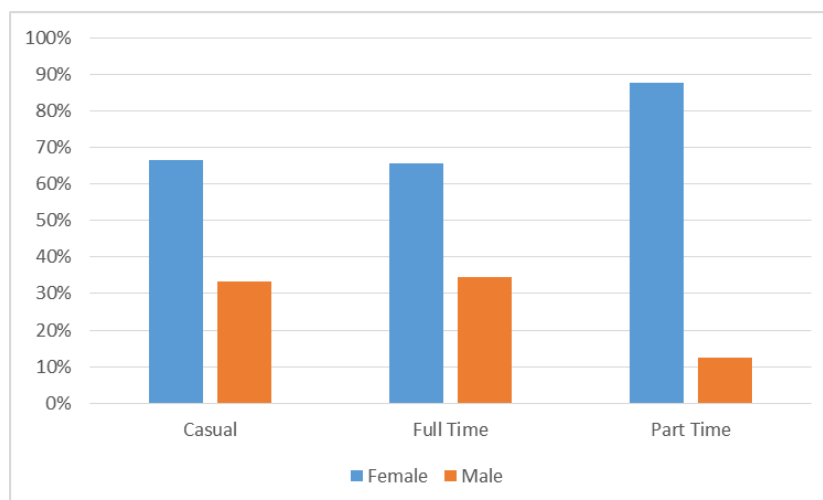
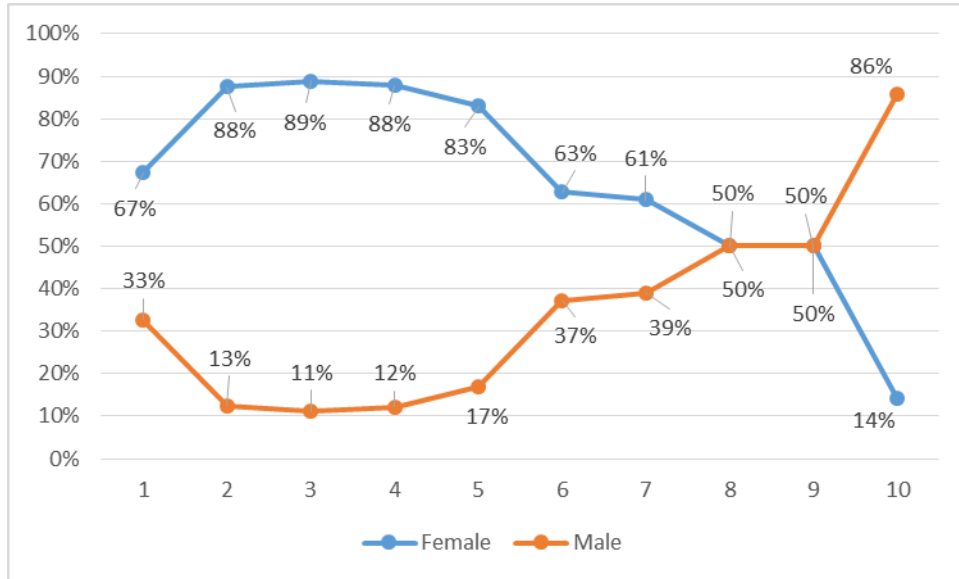


Figure 3 shows the gender of all Support staff in each grade.

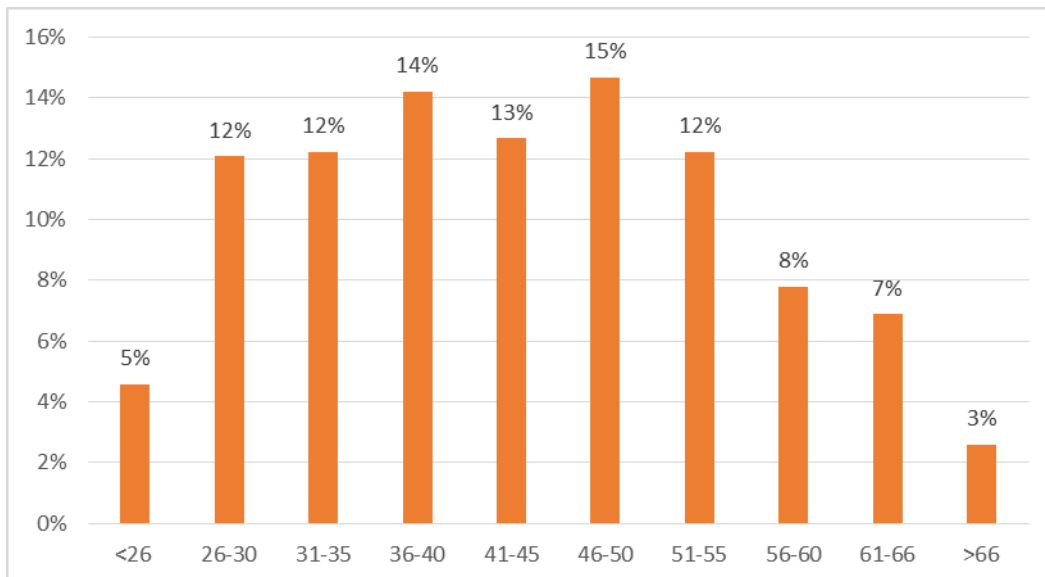
Figure 3



Age

Figure 4 shows the age of all Support staff.

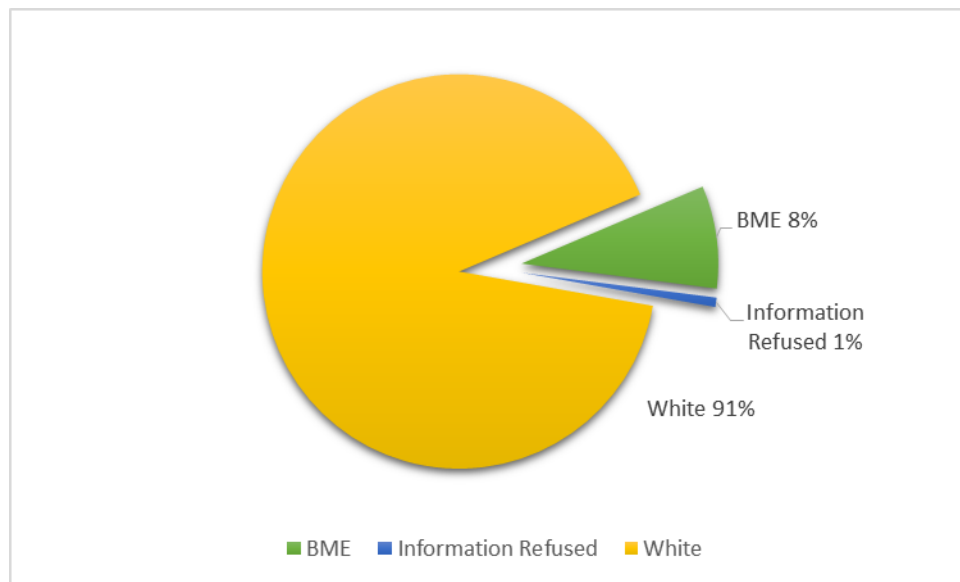
Figure 4



Ethnicity

Figure 5 shows the ethnicity of all support staff at the University. BME staff make up 8% of all support staff.

Figure 5



Disability

Figure 6 shows the percentage of all support staff that have declared a disability.

Figure 6

